

4,350
MEMBERS &
GROWING!

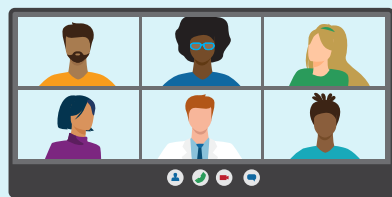
**Your Feedback is Essential
to Improving Our Programs**

We are grateful to our Community Insights Network, established in 2017 and made up mostly of ABIM Board Certified Physicians, who share feedback and insights that are invaluable to enhancing our programs for all physicians.

Maintaining Open Lines of Communication in 2023

**10 Diplomate
Panel Meetings**

11 BPR Panelists, 12 LKA Panelists



37 One-On-One Interviews

DEI, LKA Score Report, Learning Study



**12 Research
Participants**

DEI



**1,950 Community
Engagement Emails**

*Including surveys and
other CIN related
engagement activities*



611 Survey Recipients

*BPR rating scale, BPR name, Hematology
assessment name*



Sharing Stories of Our Members
Just to name a few...



Kara Chaudhary, MD
ABIM Blog, June, 2023



Renée Bullock-Palmer, MD,
FACC, FAHA, FASNC, FASE, FSCCT
ABIM Blog, January, 2023



Ali Khan, MD
MPP, FACP
ABIM Blog, June, 2023